

# Deanside Village.

Right where you are.



**SHERRIDON**  
*'building made easy'*

SHERRIDON

## FAIRFIELD 231

**\$784,928**

4 2 2

LOT: 1846

AREA: 448m<sup>2</sup>

FRONTAGE: 14m

### INCLUSIONS

Fixed Site Costs Including Rock Removal  
7-star energy rated home

Double-glazed awning windows and sliding doors to single-storey homes (where required)

Double-glazed awning windows and sliding doors to double-storey homes throughout

40mm edge category 1 stone bench top  
1500mm freestanding bath

Brickwork above all elevations including windows, external doors and over garage with face brick.

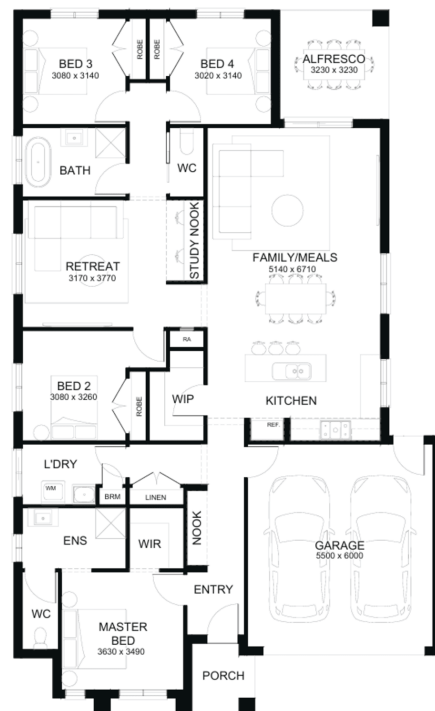
Evaporative cooling throughout

900mm appliances

Tiled shower bases

Colour on concrete driveway (up to 35m<sup>2</sup>)

Overhead cupboards to kitchen



[deansidevillage.com.au](http://deansidevillage.com.au)

Inspiring Places™ delivered by Moremac.

WHILE BEST ENDEAVOURS HAVE BEEN USED TO PROVIDE INFORMATION IN THIS PUBLICATION THAT IS TRUE AND ACCURATE, DEANSIDE VILLAGE, ITS CONSULTANTS, AGENTS AND RELATED ENTITIES ACCEPT NO RESPONSIBILITY AND DISCLAIM ALL LIABILITY IN RESPECT TO ANY ERRORS OR INACCURACIES IT MAY CONTAIN. PROSPECTIVE PURCHASERS SHOULD MAKE THEIR OWN ENQUIRIES TO VERIFY THE INFORMATION CONTAINED HEREIN.