

# Deanside Village.

Right where you are.



ASTON HOMES

## VERVE 20

**\$697,250**

4  2  2 

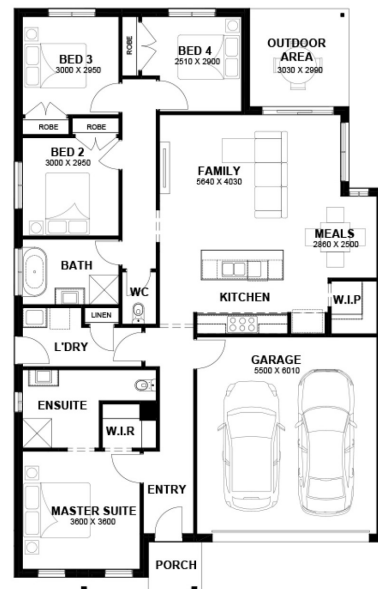
LOT: 1845

AREA: 400m<sup>2</sup>

FRONTAGE: 12.5m

### INCLUSIONS

Tiles/Laminate flooring in living areas  
2.2kw Solar System  
Double Glazed Windows.  
20mm Stone Benchtops Throughout.  
2590mm High Ceilings Throughout.  
Ducted Heating.  
LED Tri-Colour Downlights Throughout.  
Site Costs Included (Subject to T&C's).  
Soft Closing Drawers & Doors To All Cabinets.  
900mm stainless steel appliances (Design Specific).  
215L Heat Pump Hot water Service.  
Back to Wall freestanding bath tub (size specific).



[deansidevillage.com.au](http://deansidevillage.com.au)

Inspiring Places™ delivered by Moremac.

WHILE BEST ENDEAVOURS HAVE BEEN USED TO PROVIDE INFORMATION IN THIS PUBLICATION THAT IS TRUE AND ACCURATE, DEANSIDE VILLAGE, ITS CONSULTANTS, AGENTS AND RELATED ENTITIES ACCEPT NO RESPONSIBILITY AND DISCLAIM ALL LIABILITY IN RESPECT TO ANY ERRORS OR INACCURACIES IT MAY CONTAIN. PROSPECTIVE PURCHASERS SHOULD MAKE THEIR OWN ENQUIRIES TO VERIFY THE INFORMATION CONTAINED HEREIN.