

# Deanside Village.

Right where you are.



NEW PROPERTY GROUP

## RIPPONLEA 6-165

\$464,800

3 2 2

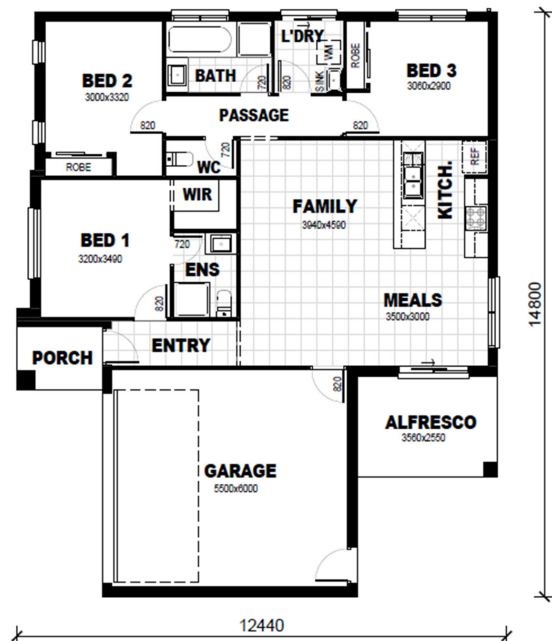
LOT: 944

AREA: 266m<sup>2</sup>

FRONTAGE: 15.82m

### INCLUSIONS

- Fixed site costs and connections
- Developers guidelines: NBN, 450mm eaves
- Range of facades including feature render
- Feature front door with Tri lock door handle
- Colobond gutter, downpipe & fascia
- High ceiling 2550mm
- Quality floor coverings including porcelain tiles
- Overhead kitchen cabinets inc above fridge
- LED Lighting
- 900mm European inspired kitchen appliances
- Luxury porcelain kitchen splashback
- Designer range dishwasher
- 40mm stone benchtops to kitchen
- 20mm stone benchtops to bathroom & ensuite
- Laminated laundry cabinets
- Remote controlled sectional garage door
- Coloured concrete driveway



[deansidevillage.com.au](http://deansidevillage.com.au)

WHILE BEST ENDEAVOURS HAVE BEEN USED TO PROVIDE INFORMATION IN THIS PUBLICATION THAT IS TRUE AND ACCURATE, DEANSIDE VILLAGE, ITS CONSULTANTS, AGENTS AND RELATED ENTITIES ACCEPT NO RESPONSIBILITY AND DISCLAIM ALL LIABILITY IN RESPECT TO ANY ERRORS OR INACCURACIES IT MAY CONTAIN. PROSPECTIVE PURCHASERS SHOULD MAKE THEIR OWN ENQUIRIES TO VERIFY THE INFORMATION CONTAINED HEREIN.

MOREMAC  
PROPERTY GROUP