

Deanside Village.

Right where you are.



CENTRAL PROPERTY

DAYMAN 25

\$596,300

4  2  2 

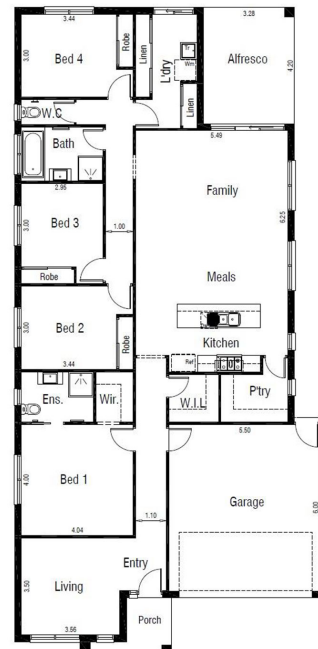
LOT: 426

AREA: 400m²

FRONTAGE: 12.5m

INCLUSIONS

Design Guidelines Included
Fixed Site Costs- Price Freeze March 2021
Choice of Facade's
Double Glazed windows throughout
2590mm Ceilings
Stone to Kitchen, Ensuite & Bathroom
900mm SS Kitchen appliances
Slimline Evap Cooling
Plus Lot's More



deansidevillage.com.au

WHILE BEST ENDEAVOURS HAVE BEEN USED TO PROVIDE INFORMATION IN THIS PUBLICATION THAT IS TRUE AND ACCURATE, DEANSIDE VILLAGE, ITS CONSULTANTS, AGENTS AND RELATED ENTITIES ACCEPT NO RESPONSIBILITY AND DISCLAIM ALL LIABILITY IN RESPECT TO ANY ERRORS OR INACCURACIES IT MAY CONTAIN. PROSPECTIVE PURCHASERS SHOULD MAKE THEIR OWN ENQUIRIES TO VERIFY THE INFORMATION CONTAINED HEREIN.

 MOREMAC
PROPERTY GROUP