

Deanside Village.

Right where you are.



RIDGEWATER HOMES

FEATHERTOP 23

\$573,440

4  2  2 

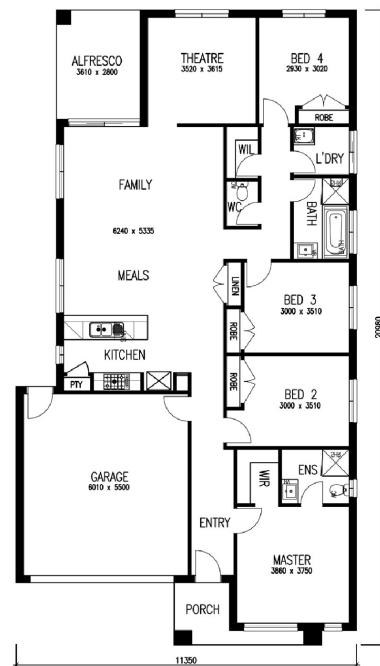
LOT: 626

AREA: 350m²

FRONTAGE: 12.5m

INCLUSIONS

- 2590mm High Ceilings
- 900mm upright Cooktop and Oven
- 900mm Rangehood
- 20mm Stone Benchtop in kitchen
- Holland blinds throughout
- Carpet to all Bedrooms & Second-Living area
- Timber look laminate flooring throughout except wet areas & bedrooms
- 820mm wide Front Door
- Colour on Driveway, upto 30msq
- Ceramic Tiles to all Wet areas
- Locks on all openable windows
- Panel lift Garage Door with two remotes
- Featured Rendered Facade
- Split-System cooling to family area
- Capped cold water point to ref. space
- TV-Antenna & Letterbox
- Wall mounted Clothesline



deansidevillage.com.au

WHILE BEST ENDEAVOURS HAVE BEEN USED TO PROVIDE INFORMATION IN THIS PUBLICATION THAT IS TRUE AND ACCURATE, DEANSIDE VILLAGE, ITS CONSULTANTS, AGENTS AND RELATED ENTITIES ACCEPT NO RESPONSIBILITY AND DISCLAIM ALL LIABILITY IN RESPECT TO ANY ERRORS OR INACCURACIES IT MAY CONTAIN. PROSPECTIVE PURCHASERS SHOULD MAKE THEIR OWN ENQUIRIES TO VERIFY THE INFORMATION CONTAINED HEREIN.

 MOREMAC
PROPERTY GROUP