

Deanside Village.

Right where you are.



MIMOSA HOMES

LEEMORE 221

\$733,910

4 2 2

LOT: 2231

AREA: 400m²

FRONTAGE: 12.5m

INCLUSIONS

50 Year Structural Warranty!

Inclusive of site costs & connections with H1 class slab as per standard inclusions!

Quality floor coverings throughout entire home!

Higher ceilings 2550mm to ground floor!

Double Glazed Awning windows!

LED Downlights to entire home!

Fibre Optic Provision!

Vitrified Compact Surface benchtop to kitchen, bathroom & ensuite!

900mm S/S upright oven and cook top with S/S canopy rangehood!

Stainless steel Dishwasher and Microwave with trim kit!

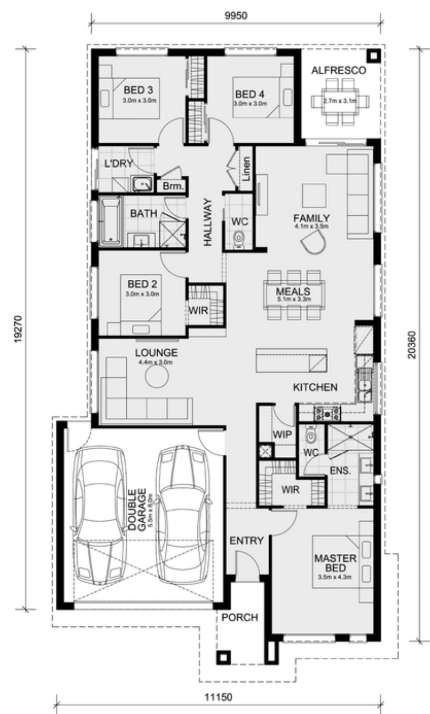
7 star energy!

Flexible floor plans & so much more!

CALL BUILDER DIRECT!

All plans and facades are indicative only and may change. Mimosa Homes

may amend plans, specifications, and prices without notice. Package



deansidevillage.com.au

Inspiring Places™ delivered by Moremac.

WHILE BEST ENDEAVOURS HAVE BEEN USED TO PROVIDE INFORMATION IN THIS PUBLICATION THAT IS TRUE AND ACCURATE, DEANSIDE VILLAGE, ITS CONSULTANTS, AGENTS AND RELATED ENTITIES ACCEPT NO RESPONSIBILITY AND DISCLAIM ALL LIABILITY IN RESPECT TO ANY ERRORS OR INACCURACIES IT MAY CONTAIN. PROSPECTIVE PURCHASERS SHOULD MAKE THEIR OWN ENQUIRIES TO VERIFY THE INFORMATION CONTAINED HEREIN.