

# Deanside Village.

Right where you are.



MIMOSA HOMES

## JOHNNA 240

**\$715,000**

4 2 2

LOT: 1847

AREA: 400m<sup>2</sup>

FRONTAGE: 12.5m

### INCLUSIONS

Inclusive of site costs & connections with H1 class slab as per standard inclusions!

50-year Structural Warranty!

Quality floor coverings throughout entire home!

Higher ceilings 2550mm to ground floor!

Double Glazed Awning windows!

LED Downlights to entire home!

Vitrified Compact Surface benchtop to kitchen, bathroom & ensuite!

900mm S/S upright oven and cook top with S/S canopy rangehood!

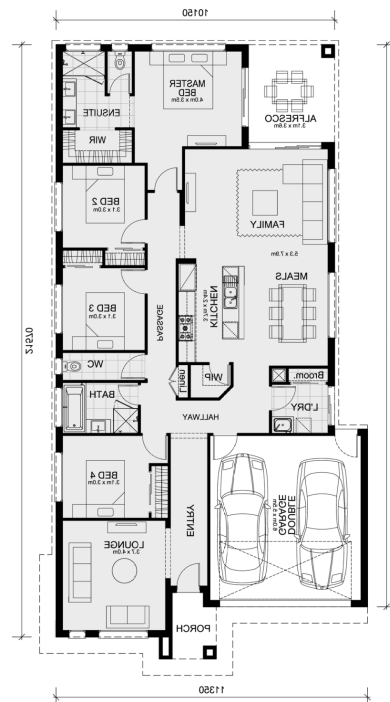
Stainless steel Dishwasher and Microwave

Overhead cupboards to kitchen (Design specific)

2000mm High framed shower screen to ensuite & bathroom!

7 star energy!

Flexible floor plans & so much more!



[deansidevillage.com.au](http://deansidevillage.com.au)

Inspiring Places™ delivered by Moremac.

WHILE BEST ENDEAVOURS HAVE BEEN USED TO PROVIDE INFORMATION IN THIS PUBLICATION THAT IS TRUE AND ACCURATE, DEANSIDE VILLAGE, ITS CONSULTANTS, AGENTS AND RELATED ENTITIES ACCEPT NO RESPONSIBILITY AND DISCLAIM ALL LIABILITY IN RESPECT TO ANY ERRORS OR INACCURACIES IT MAY CONTAIN. PROSPECTIVE PURCHASERS SHOULD MAKE THEIR OWN ENQUIRIES TO VERIFY THE INFORMATION CONTAINED HEREIN.