

# Deanside Village.

Right where you are.



SIMONDS

## ALTONA 22\_211

\$790,428

3 2 2

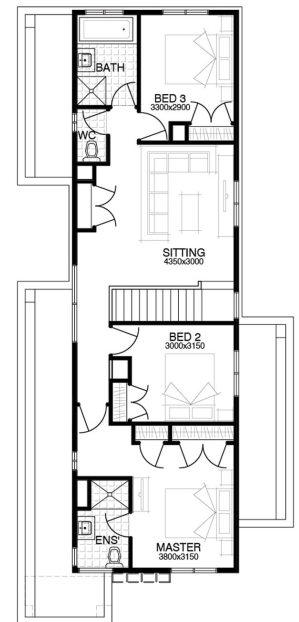
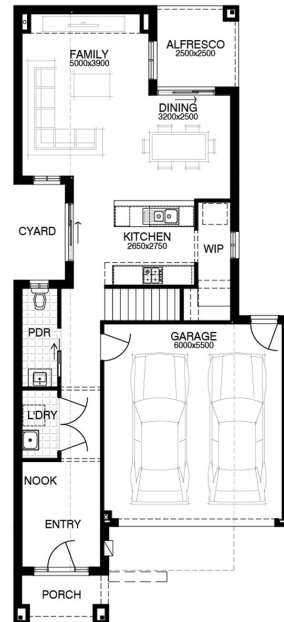
LOT: 1843

AREA: 336m<sup>2</sup>

FRONTAGE: 10.5m

### INCLUSIONS

DEVELOPER & COUNCIL REQS  
FLOORING THROUGHOUT  
20MM CAESARSTONE BENCHTOP TO KITCHEN  
OVERHEAD CUPBOARDS TO KITCHEN  
20 DOWNLIGHTS  
BRICKWORK OVER WINDOWS  
COLOURED CONCRETE DRIVEWAY UP TO 40M2  
REMOTE TO GARAGE DOOR  
NBN PROVISIONS (EXCLUDES HUB)



[deansidevillage.com.au](http://deansidevillage.com.au)

WHILE BEST ENDEAVOURS HAVE BEEN USED TO PROVIDE INFORMATION IN THIS PUBLICATION THAT IS TRUE AND ACCURATE, DEANSIDE VILLAGE, ITS CONSULTANTS, AGENTS AND RELATED ENTITIES ACCEPT NO RESPONSIBILITY AND DISCLAIM ALL LIABILITY IN RESPECT TO ANY ERRORS OR INACCURACIES IT MAY CONTAIN. PROSPECTIVE PURCHASERS SHOULD MAKE THEIR OWN ENQUIRIES TO VERIFY THE INFORMATION CONTAINED HEREIN.

MOREMAC  
PROPERTY GROUP