

Deanside Village.

Right where you are.



SIMONDS

ALTONA 22_211

\$750,728

3 2 2

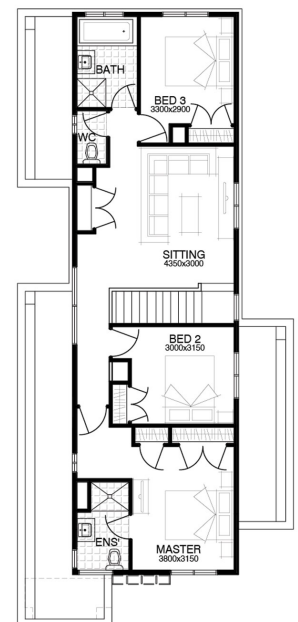
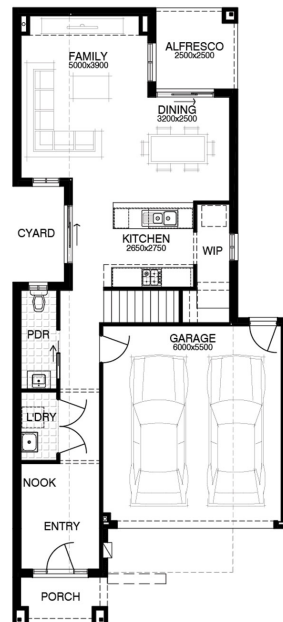
LOT: 1843

AREA: 336m²

FRONTAGE: 10.5m

INCLUSIONS

- DEVELOPER & COUNCIL REQS
- FLOORING THROUGHOUT
- 20MM CAESARSTONE BENCHTOP TO KITCHEN
- OVERHEAD CUPBOARDS TO KITCHEN
- 20 DOWNLIGHTS
- BRICKWORK OVER WINDOWS
- COLOURED CONCRETE DRIVEWAY UP TO 40M2
- REMOTE TO GARAGE DOOR
- NBN PROVISIONS (EXCLUDES HUB)
- TOWEL RAILS & TOILET ROLL HOLDERS



deansidevillage.com.au

WHILE BEST ENDEAVOURS HAVE BEEN USED TO PROVIDE INFORMATION IN THIS PUBLICATION THAT IS TRUE AND ACCURATE, DEANSIDE VILLAGE, ITS CONSULTANTS, AGENTS AND RELATED ENTITIES ACCEPT NO RESPONSIBILITY AND DISCLAIM ALL LIABILITY IN RESPECT TO ANY ERRORS OR INACCURACIES IT MAY CONTAIN. PROSPECTIVE PURCHASERS SHOULD MAKE THEIR OWN ENQUIRIES TO VERIFY THE INFORMATION CONTAINED HEREIN.

MOREMAC
PROPERTY GROUP