

# Deanside Village.

Right where you are.



CARLISLE HOMES

## MACAN 22

\$599,900

4  2  2 

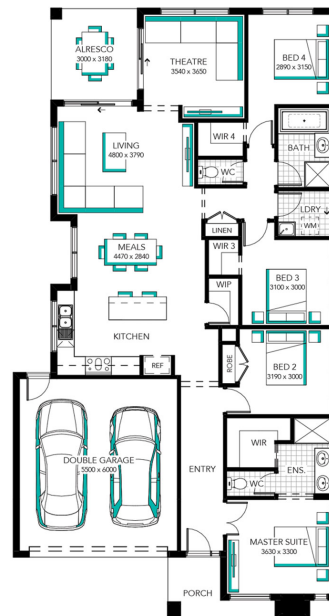
LOT: 838

AREA: 400m<sup>2</sup>

FRONTAGE: 12.5m

### INCLUSIONS

- FIXED PRICE SITE COSTS AND CONNECTIONS
- DEVELOPER AND COUNCIL REQUIREMENTS
- ONLY 2K DEPOSIT UNTIL SLAB STAGE^^
- FLOORING THROUGHOUT
- 20MM CAESARSTONE BENCHTOP WITH 16MM SHADOWLINE TO KITCHEN
- GLASS SPLASH BACK TO KITCHEN
- STAINLESS STEEL DISHWASHER
- LAMINATE LAUNDRY CABINETRY AND STAINLESS STEEL TROUGH
- WHITE LED DOWNLIGHTS TO ENTRY AND LIVING AREAS
- ADDITIONAL DOUBLE POWER POINTS TO THE HOME
- ADDITIONAL TELEVISION POINT/S
- TOWEL RAIL OR RING AND TOILET ROLL HOLDERS
- 6 STAR ENERGY RATING



[deansidevillage.com.au](http://deansidevillage.com.au)

WHILE BEST ENDEAVOURS HAVE BEEN USED TO PROVIDE INFORMATION IN THIS PUBLICATION THAT IS TRUE AND ACCURATE, DEANSIDE VILLAGE, ITS CONSULTANTS, AGENTS AND RELATED ENTITIES ACCEPT NO RESPONSIBILITY AND DISCLAIM ALL LIABILITY IN RESPECT TO ANY ERRORS OR INACCURACIES IT MAY CONTAIN. PROSPECTIVE PURCHASERS SHOULD MAKE THEIR OWN ENQUIRIES TO VERIFY THE INFORMATION CONTAINED HEREIN.

 MOREMAC  
PROPERTY GROUP