

Deanside Village.

Right where you are.



CARLISLE HOMES

EDGEWOOD 25 MK2

\$614,200

4  2  2 

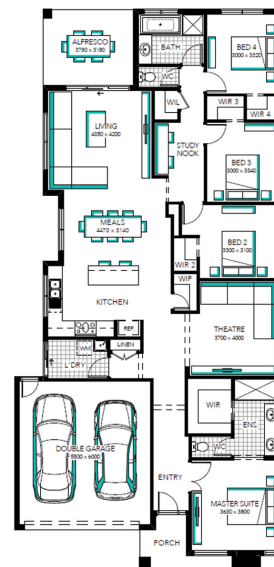
LOT: 838

AREA: 400m²

FRONTAGE: 12.5m

INCLUSIONS

FIXED PRICE SITE COSTS AND CONNECTIONS
DEVELOPER AND COUNCIL REQUIREMENTS
ONLY 2K DEPOSIT UNTIL SLAB STAGE^^
FLOORING THROUGHOUT
20MM CAESARSTONE BENCHTOP WITH 16MM SHADOWLINE TO KITCHEN
GLASS SPLASH BACK TO KITCHEN
STAINLESS STEEL DISHWASHER
LAMINATE LAUNDRY CABINETRY AND STAINLESS STEEL TROUGH
WHITE LED DOWNLIGHTS TO ENTRY AND LIVING AREAS
ADDITIONAL DOUBLE POWER POINTS TO THE HOME
ADDITIONAL TELEVISION POINT/S
TOWEL RAIL OR RING AND TOILET ROLL HOLDERS
6 STAR ENERGY RATING



deansidevillage.com.au

WHILE BEST ENDEAVOURS HAVE BEEN USED TO PROVIDE INFORMATION IN THIS PUBLICATION THAT IS TRUE AND ACCURATE, DEANSIDE VILLAGE, ITS CONSULTANTS, AGENTS AND RELATED ENTITIES ACCEPT NO RESPONSIBILITY AND DISCLAIM ALL LIABILITY IN RESPECT TO ANY ERRORS OR INACCURACIES IT MAY CONTAIN. PROSPECTIVE PURCHASERS SHOULD MAKE THEIR OWN ENQUIRIES TO VERIFY THE INFORMATION CONTAINED HEREIN.

 MOREMAC
PROPERTY GROUP