

# Deanside Village.

Right where you are.



CARLISLE HOMES

## SPRINGWOOD 23

\$607,900

4  2  2 

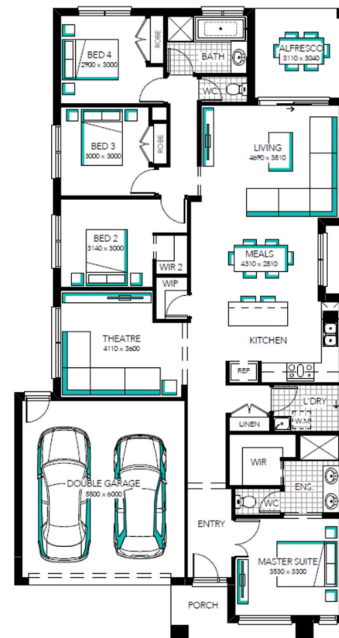
LOT: 430

AREA: 451m<sup>2</sup>

FRONTAGE: 14.08m

### INCLUSIONS

FIXED PRICE SITE COSTS AND CONNECTIONS  
DEVELOPER AND COUNCIL REQUIREMENTS  
ONLY 2K DEPOSIT UNTIL SLAB STAGE^^  
FLOORING THROUGHOUT  
20MM CAESARSTONE BENCHTOP WITH 16MM SHADOWLINE TO KITCHEN  
GLASS SPLASH BACK TO KITCHEN  
STAINLESS STEEL DISHWASHER  
LAMINATE LAUNDRY CABINETRY AND STAINLESS STEEL TROUGH  
WHITE LED DOWNLIGHTS TO ENTRY AND LIVING AREAS  
ADDITIONAL DOUBLE POWER POINTS TO THE HOME  
ADDITIONAL TELEVISION POINT/S  
TOWEL RAIL OR RING AND TOILET ROLL HOLDERS  
6 STAR ENERGY RATING



[deansidevillage.com.au](http://deansidevillage.com.au)

WHILE BEST ENDEAVOURS HAVE BEEN USED TO PROVIDE INFORMATION IN THIS PUBLICATION THAT IS TRUE AND ACCURATE, DEANSIDE VILLAGE, ITS CONSULTANTS, AGENTS AND RELATED ENTITIES ACCEPT NO RESPONSIBILITY AND DISCLAIM ALL LIABILITY IN RESPECT TO ANY ERRORS OR INACCURACIES IT MAY CONTAIN. PROSPECTIVE PURCHASERS SHOULD MAKE THEIR OWN ENQUIRIES TO VERIFY THE INFORMATION CONTAINED HEREIN.

 MOREMAC  
PROPERTY GROUP