

# Deanside Village.

Right where you are.



SIMONDS

## WHITEHAVEN

~~\$663,897~~  
**\$262,246**

4 3 2

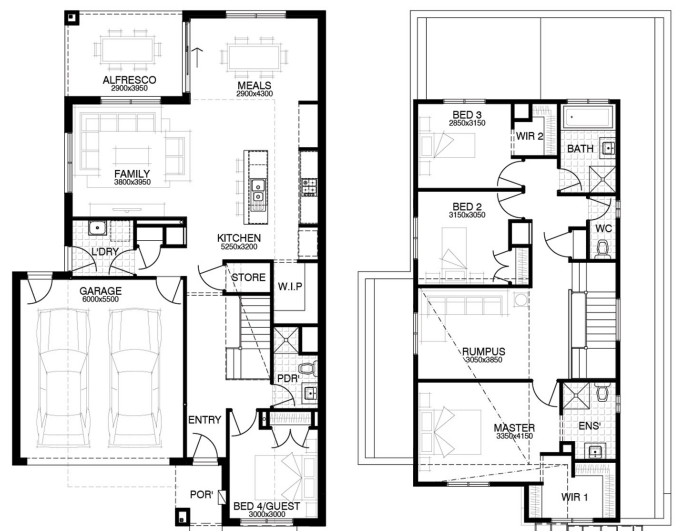
LOT: 433

AREA: 367m<sup>2</sup>

FRONTAGE: 11.29m

### INCLUSIONS

- DEVELOPER & COUNCIL REQS
- PART A & B TERMITE PROTECTION
- 3 COAT PAINT APPLICATION
- 450MM EAVES TO FACADE
- SECTIONAL LIFT GARAGE DOOR
- KEYED WINDOW LOCKS TO ALL OPENABLE WINDOWS
- 600MM STAINLESS STEEL APPLIANCES
- TILED SHOWER BASES
- INTERNAL & EXTERNAL PACKS



[deansidevillage.com.au](http://deansidevillage.com.au)

WHILE BEST ENDEAVOURS HAVE BEEN USED TO PROVIDE INFORMATION IN THIS PUBLICATION THAT IS TRUE AND ACCURATE, DEANSIDE VILLAGE, ITS CONSULTANTS, AGENTS AND RELATED ENTITIES ACCEPT NO RESPONSIBILITY AND DISCLAIM ALL LIABILITY IN RESPECT TO ANY ERRORS OR INACCURACIES IT MAY CONTAIN. PROSPECTIVE PURCHASERS SHOULD MAKE THEIR OWN ENQUIRIES TO VERIFY THE INFORMATION CONTAINED HEREIN.

