

# Deanside Village.

Right where you are.



**SIMONDS**  
BUILDING HOMES SINCE 1949

SIMONDS

## CHESTERTON

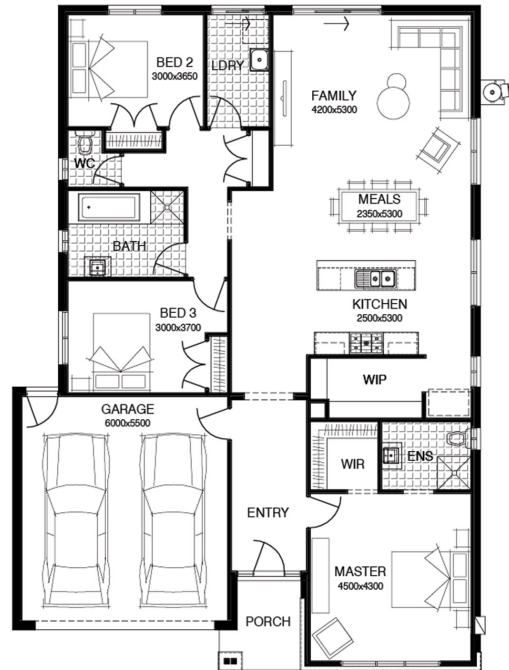
~~\$608,111~~  
**\$21,203**

3 2 2

LOT: 411  
AREA: 448m<sup>2</sup>  
FRONTAGE: 14m

### INCLUSIONS

\$19,000 OF FREE UPGRADES  
DEVELOPER AND COUNCIL REQUIREMENTS  
UP TO 100M<sup>2</sup> (SINGLE STOREY) CAT 1 OR 180M<sup>2</sup> (DOUBLE STOREY) CAT  
2 CARPET  
UP TO 50M<sup>2</sup> TIMBER FLOORING LAMINATE  
UP TO 40M<sup>2</sup> OF 100MM COLOURED THROUGH CONCRETE  
REMOTE CONTROL TO GARAGE DOOR



[deansidevillage.com.au](http://deansidevillage.com.au)

WHILE BEST ENDEAVOURS HAVE BEEN USED TO PROVIDE INFORMATION IN THIS PUBLICATION THAT IS TRUE AND ACCURATE, DEANSIDE VILLAGE, ITS CONSULTANTS, AGENTS AND RELATED ENTITIES ACCEPT NO RESPONSIBILITY AND DISCLAIM ALL LIABILITY IN RESPECT TO ANY ERRORS OR INACCURACIES IT MAY CONTAIN. PROSPECTIVE PURCHASERS SHOULD MAKE THEIR OWN ENQUIRIES TO VERIFY THE INFORMATION CONTAINED HEREIN.

**MOREMAC**  
PROPERTY GROUP