

# Deanside Village.

Right where you are.



STRIVE HOMES

## AVALON 130

\$440,900

3 2 1

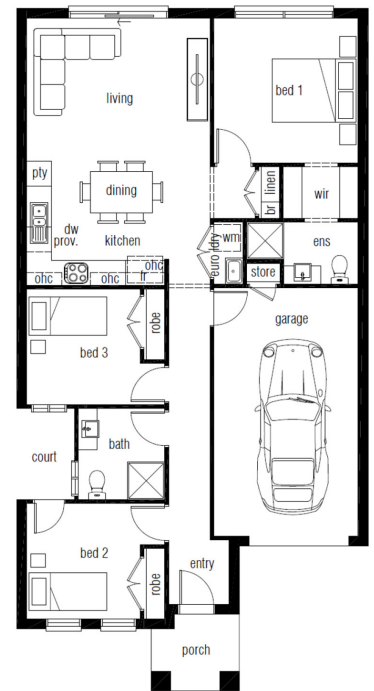
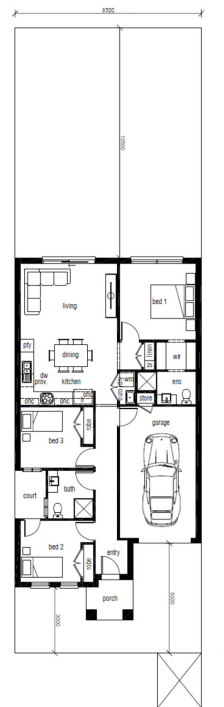
LOT: 439

AREA: 242m<sup>2</sup>

FRONTAGE: 8.5m

### INCLUSIONS

- Fixed Site costs
- Custom Design, to suit clients exact needs
- Choice from Strive Homes Facade range
- Driveway & Pathway
- Letter Box, Clothes Line
- Tiling & Carpets to remainder of home
- NBN run in
- Blinds to all bedrooms and living area windows



[deansidevillage.com.au](http://deansidevillage.com.au)

WHILE BEST ENDEAVOURS HAVE BEEN USED TO PROVIDE INFORMATION IN THIS PUBLICATION THAT IS TRUE AND ACCURATE, DEANSIDE VILLAGE, ITS CONSULTANTS, AGENTS AND RELATED ENTITIES ACCEPT NO RESPONSIBILITY AND DISCLAIM ALL LIABILITY IN RESPECT TO ANY ERRORS OR INACCURACIES IT MAY CONTAIN. PROSPECTIVE PURCHASERS SHOULD MAKE THEIR OWN ENQUIRIES TO VERIFY THE INFORMATION CONTAINED HEREIN.

MOREMAC  
PROPERTY GROUP