

Deanside Village.

Right where you are.



STRIVE HOMES

KEWARRA 161

\$456,400

3 2 1

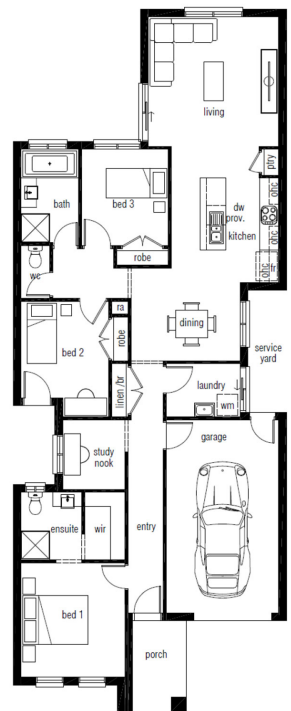
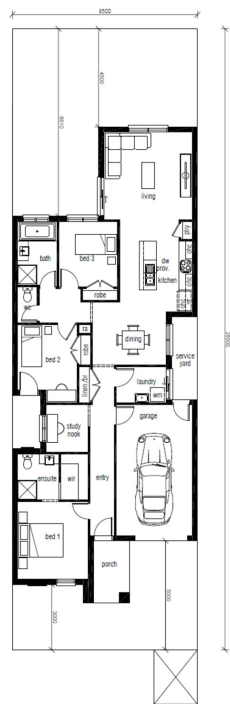
LOT: 437

AREA: 242m²

FRONTAGE: 8.5m

INCLUSIONS

- Fixed Site costs
- Custom Design, to suit clients exact needs
- Choice from Strive Homes Facade range
- Driveway & Pathway
- Letter Box, Clothes Line
- Tiling & Carpets to remainder of home
- NBN run in
- Blinds to all bedrooms and living area windows



deansidevillage.com.au

WHILE BEST ENDEAVOURS HAVE BEEN USED TO PROVIDE INFORMATION IN THIS PUBLICATION THAT IS TRUE AND ACCURATE, DEANSIDE VILLAGE, ITS CONSULTANTS, AGENTS AND RELATED ENTITIES ACCEPT NO RESPONSIBILITY AND DISCLAIM ALL LIABILITY IN RESPECT TO ANY ERRORS OR INACCURACIES IT MAY CONTAIN. PROSPECTIVE PURCHASERS SHOULD MAKE THEIR OWN ENQUIRIES TO VERIFY THE INFORMATION CONTAINED HEREIN.

MOREMAC
PROPERTY GROUP