

Deanside Village.

Right where you are.



FAIRHAVEN HOMES

KIAMA 226

\$596,418

3  2  2 

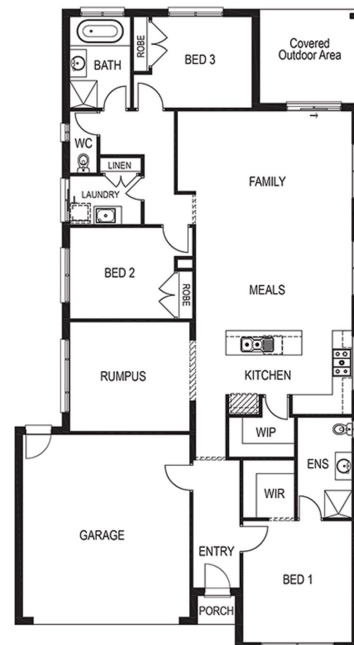
LOT: 327

AREA: 403m²

FRONTAGE: 12.66m

INCLUSIONS

Up to \$40,000 of upgrades (House specific)
Developers Guidelines
Fixed Site Costs
Colorbond® roof
900mm Stainless Steel Upright Cooker
900mm Stainless Steel Canopy Rangehood
Overhead Cabinets to the Kitchen
Soft Close hinged doors and drawers
Ducted Heating
6-star energy rating on BEST orientation



deansidevillage.com.au

WHILE BEST ENDEAVOURS HAVE BEEN USED TO PROVIDE INFORMATION IN THIS PUBLICATION THAT IS TRUE AND ACCURATE, DEANSIDE VILLAGE, ITS CONSULTANTS, AGENTS AND RELATED ENTITIES ACCEPT NO RESPONSIBILITY AND DISCLAIM ALL LIABILITY IN RESPECT TO ANY ERRORS OR INACCURACIES IT MAY CONTAIN. PROSPECTIVE PURCHASERS SHOULD MAKE THEIR OWN ENQUIRIES TO VERIFY THE INFORMATION CONTAINED HEREIN.

 MOREMAC
PROPERTY GROUP