

# Deanside Village.

Right where you are.



SIMONDS

## CAPE 22

**\$710,687**

3 2 2

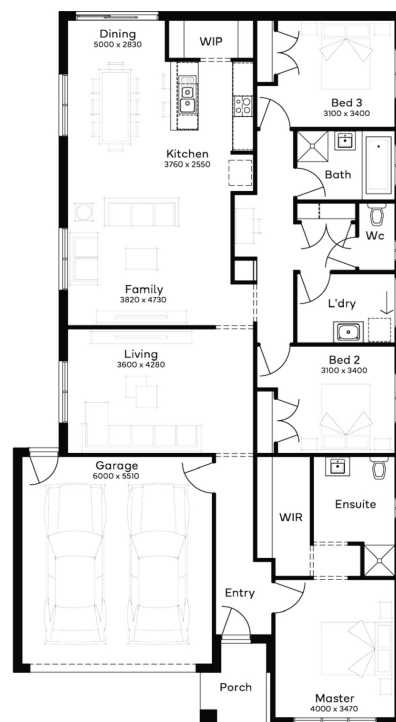
LOT: 2105

AREA: 350m<sup>2</sup>

FRONTAGE: 12.5m

### INCLUSIONS

Fixed price Site Costs  
Developer & council requirements  
Photovoltaic panels with inverter  
Feature front entry door  
Colorbond Sectional garage door & remote controls  
Floor coverings to entire house  
20mm Stone benchtops to kitchen  
Quality stainless steel cooktop & oven  
Ducted Heating  
Plus much more!



[deansidevillage.com.au](http://deansidevillage.com.au)

Inspiring Places™ delivered by Moremac.

WHILE BEST ENDEAVOURS HAVE BEEN USED TO PROVIDE INFORMATION IN THIS PUBLICATION THAT IS TRUE AND ACCURATE, DEANSIDE VILLAGE, ITS CONSULTANTS, AGENTS AND RELATED ENTITIES ACCEPT NO RESPONSIBILITY AND DISCLAIM ALL LIABILITY IN RESPECT TO ANY ERRORS OR INACCURACIES IT MAY CONTAIN. PROSPECTIVE PURCHASERS SHOULD MAKE THEIR OWN ENQUIRIES TO VERIFY THE INFORMATION CONTAINED HEREIN.