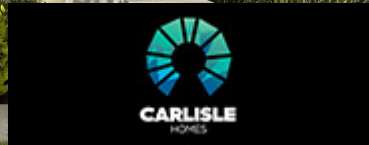


Deanside Village.

Right where you are.



CARLISLE HOMES

ILLAWARRA

~~\$917,400~~
GRAND 36

4 2 2

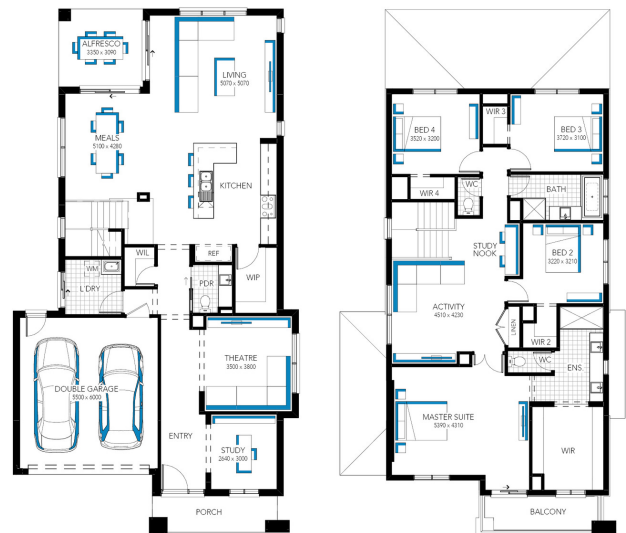
LOT: 2029

AREA: 350m²

FRONTAGE: 12.5m

INCLUSIONS

- Fixed price site costs and connections
- Developer and council requirements
- 20mm Caesarstone benchtops to kitchen
- Fisher & Paykel kitchen appliances
- Clear glass splashback or tiles to kitchen
- Opulent Bathroom fit-out
- 20mm Caesarstone to bathroom and ensuite(s) benchtops
- Laundry fit-out
- Double glazing to windows
- Feature staircase balustrade
- LED lighting
- Upgraded H-Class slab
- Entertainer door
- \$5,000 off fully rendered Hebel facades*
- 7 Star energy rating



deansidevillage.com.au

Inspiring Places™ delivered by Moremac.

WHILE BEST ENDEAVOURS HAVE BEEN USED TO PROVIDE INFORMATION IN THIS PUBLICATION THAT IS TRUE AND ACCURATE, DEANSIDE VILLAGE, ITS CONSULTANTS, AGENTS AND RELATED ENTITIES ACCEPT NO RESPONSIBILITY AND DISCLAIM ALL LIABILITY IN RESPECT TO ANY ERRORS OR INACCURACIES IT MAY CONTAIN. PROSPECTIVE PURCHASERS SHOULD MAKE THEIR OWN ENQUIRIES TO VERIFY THE INFORMATION CONTAINED HEREIN.