

# Deanside Village.

Right where you are.



**HomebuyersCentre**  
First choice in first homes

HOMEBUYERS CENTRE

## LAWSON 25

**\$765,700**

4 2 2

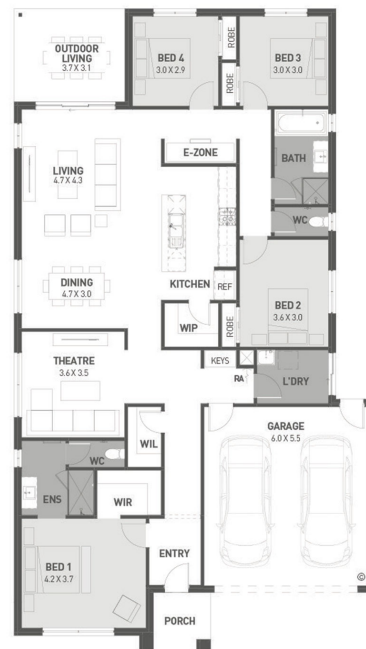
LOT: 2144

AREA: 392m<sup>2</sup>

FRONTAGE: 14m

### INCLUSIONS

- Fixed site costs
- Exposed aggregate driveway
- Celine facade included
- Quality floor coverings throughout
- Tiled kitchen splashback
- Westinghouse stainless steel appliances
- Choice of matt black or chrome tapware
- Brick infills over windows
- 25 year structural guarantee
- 12 month service warranty
- 6 Star energy rating
- NBN Connection
- 2550mm high ceilings to ground floor
- 450mm eaves to front facade



[deansidevillage.com.au](http://deansidevillage.com.au)

Inspiring Places™ delivered by Moremac.

WHILE BEST ENDEAVOURS HAVE BEEN USED TO PROVIDE INFORMATION IN THIS PUBLICATION THAT IS TRUE AND ACCURATE, DEANSIDE VILLAGE, ITS CONSULTANTS, AGENTS AND RELATED ENTITIES ACCEPT NO RESPONSIBILITY AND DISCLAIM ALL LIABILITY IN RESPECT TO ANY ERRORS OR INACCURACIES IT MAY CONTAIN. PROSPECTIVE PURCHASERS SHOULD MAKE THEIR OWN ENQUIRIES TO VERIFY THE INFORMATION CONTAINED HEREIN.